

Q What does the Child Support Worker do?

The Child Support Worker:

- Will assess your needs by reviewing your current situation (e.g., number of children, existing court documents, current court action or payments of child support).
- Will look after contacting the other parent and in some instances, locate the other parent, if needed.
- Will arrange DNA testing to determine parentage if needed.
- May obtain financial information about the other parent, if needed.
- Will determine the amount of child support to be paid by the other parent based on government Child Support Guidelines.
- May negotiate child support with the other parent to obtain a support agreement or court order.
- Will, if necessary, attend court and instruct lawyers to obtain a court order.
- Will make sure you understand the process and will be available to discuss any concerns you have about pursuing child support.

Q If the other parent pays child support, do I have to allow access with my child(ren)?

- When Child Support Services is involved, the other parent cannot ask the court to order visitation. If the other parent makes a separate application for visitation, the courts may find contact with both parents is in the child's best interests. If this is a concern for you, speak with your Child Support Worker.

Q What happens after a child support agreement or order is obtained?

- Child Support workers will register applicable agreements and orders with the Maintenance Enforcement Program (MEP).
- MEP, administered by Alberta Justice, enforces support agreements and orders and uses a variety of methods to collect money from the other parent.

Contact Information About:

Child Support Services

- 📞 780•415•6400 in Edmonton
403•297•6060 in Calgary
310•0000 toll-free and ask for the CSS office nearest to you.
- 🌐 employment.alberta.ca/css

Maintenance Enforcement Program

- 📞 MEP Info Line at 780•422•5555,
or toll-free by first dialing 310•0000
- 🌐 gov.ab.ca/just/mep

Government
of Alberta ■

CSS 1633 Rev. 2010/02



Child Support Services

A Free Service to Help Parents with Limited Income get Child Support Agreements and Orders

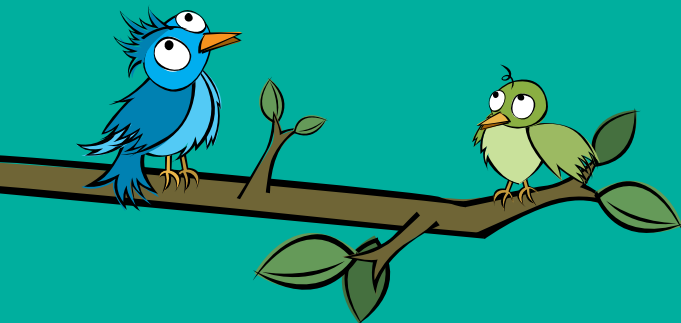
You want
the best
for your kids!



Government
of Alberta ■

alberta works

Child Support Services

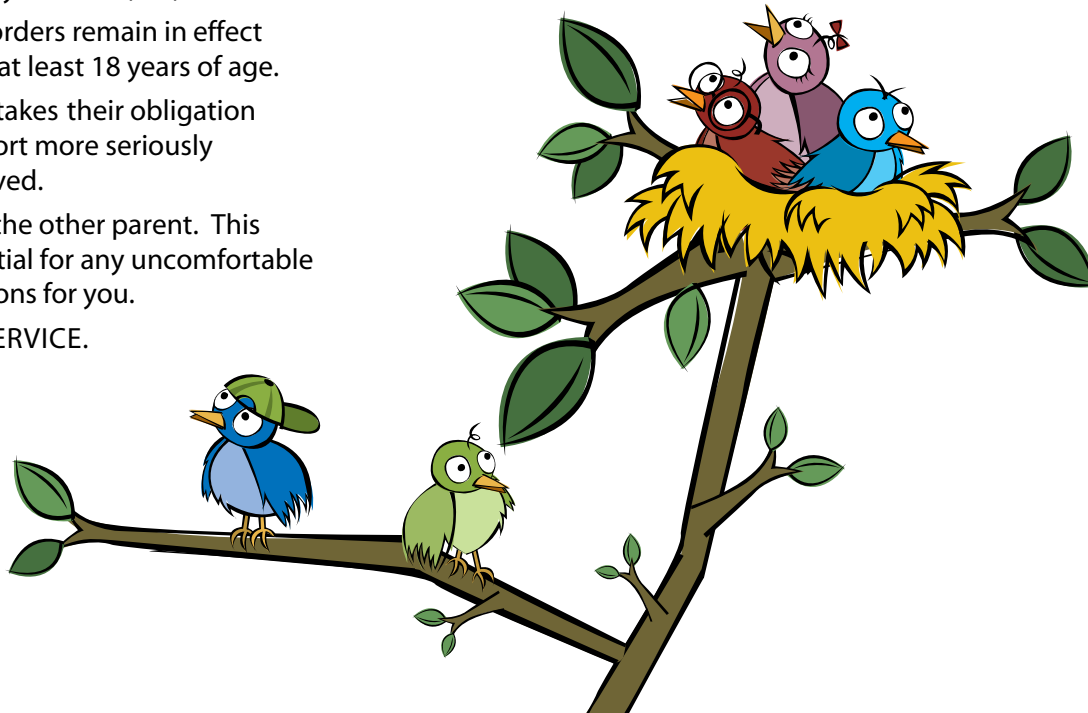


Q What is Child Support Services (CSS)?

- Child Support Services (CSS) helps single parents and parents in blended families negotiate child support agreements or obtain court orders.
- The CSS program has two main principles:
 - Children have the right to be financially supported by their parents; and
 - Parents are responsible for supporting their children to the best of their ability.

Q How can Child Support Services make a difference for me and my child(ren)?

- CSS can help you obtain a child support agreement or order, which can bring a greater sense of financial security and peace of mind.
- CSS can help to improve the quality of life for you and your child(ren).
- Agreements and orders remain in effect until your child is at least 18 years of age.
- The other parent takes their obligation to pay child support more seriously when CSS is involved.
- CSS will speak to the other parent. This lessens the potential for any uncomfortable or stressful situations for you.
- THIS IS A FREE SERVICE.



Q How do I know if I am eligible for Child Support Services (CSS)?

You are automatically eligible for CSS if you are a single parent or a parent in a blended family, receiving:

- Alberta Works Income Support benefits; or
 - Alberta Adult Health Benefits (AAHB); or
 - Assured Income for the Severely Handicapped (AISH).
- You may also be eligible if you do not have an existing support order, there is potential for support payments and you meet the income eligibility criteria.
 - Income eligibility is based on the number of people in the family and the total income from all sources within the household unit. For more information on income eligibility, please contact Child Support Services.

Q How do I begin the process?

- You start with an interview. A Child Support Worker will meet with you to discuss whether pursuing child support makes sense in your situation.

Q What kind of information will I be asked about?

You may be asked the following:

- Do you already have a support agreement or order? (If so, it is helpful to bring it with you when you meet the CSS worker)
- Would the other parent volunteer to pay Child Support each month? (If you have any commitment in writing, bring it with you).
- What is the other parent's name?
- How can we contact the other parent?
- Is there any reason we should not contact the other parent?

CSS only obtains information necessary to pursue child support. At any time you can ask your Child Support Worker to explain how the information will be used.

Q What do I need to do?

It is important that you:

- bring along documents such as: birth and marriage certificates and previous agreements or court orders if available, when you meet with the CSS worker
- notify the worker about any support action currently taking place
- attend DNA testing if necessary; and
- attend a court hearing, if necessary.